

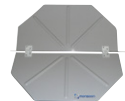
## Monsoon Axial Roof Fans

- Cowl & base moulded from recyclable polymeric material
- All sizes resistant to UV light
- Sizes 250 to 1000 dia are protected to IP54
- Can be used for supply or extract units
- Thermal overload for motor protection



CODE	DESCRIPTION
RCF250	250mm Roof Fan (0.28m³/s) Single Phase 2 Pole
RCF315	315mm Roof Fan (0.38m³/s) Single Phase 4 Pole
RCF355	355mm Roof Fan (0.78m³/s) Single Phase 4 Pole
RCF400	400mm Roof Fan (1.14m³/s) Single Phase 4 Pole
RCF450	450mm Roof Fan (1.45m³/s) Single Phase 4 Pole
RCF500	500mm Roof Fan (1.43m³/s) Single Phase 4 Pole
RCF560	560mm Roof Fan (3.05m³/s) Single Phase 4 Pole
RCF630	630mm Roof Fan (4.38m³/s) Single Phase 4 Pole
RCF315/4/T	315mm Roof Fan (0.4m³/s) Three Phase 4 Pole
RCF355/4/T	355mm Roof Fan (0.82m³/s) Three Phase 4 Pole
RCF400/4/T	400mm Roof Fan (1.21m³/s) Three Phase 4 Pole
RCF450/4/T	450mm Roof Fan (1.54m³/s) Three Phase 4 Pole
RCF500/4/T	500mm Roof Fan (1.6m³/s) Three Phase 4 Pole
RCF560/4/T	560mm Roof Fan (2.76m³/s) Three Phase 4 Pole
RCF630/4/T	630mm Roof Fan (4.49m³/s) Three Phase 4 Pole
RCF710/4/T	710mm Roof Fan (6.1m³/s) Three Phase 4 Pole

CODE	DESCRIPTION
PB250	250mm Purlin Box
PB315	315mm Purlin Box
PB350	355mm Purlin Box
PB400/450	400mm Purlin Box
PB500/560	500mm Purlin Box
PB630	630mm Purlin Box
PB710	710mm Purlin Box
RCS	Cowl Back Draught Shutters 250mm - 710mm



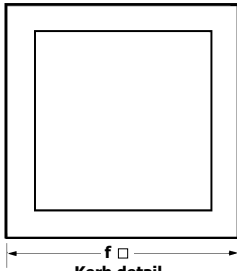
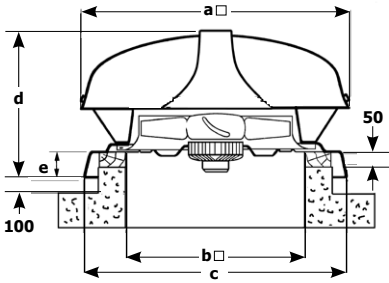
Manufactured incorporating maintenance free, UV stabilised fire retardant glass reinforced plastic, Monsoon roof terminals represent that very latest in roof ventilator manufacturing design.

Standard roof terminals are supplied with optional wire guard, shutters, purlin boxes if required. The high gloss GRP produces a smooth, low profile, visually pleasing terminal.

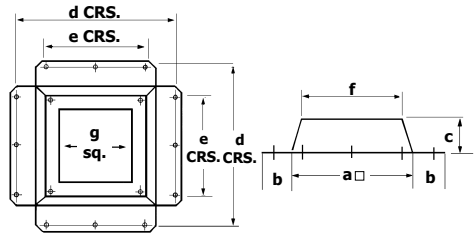
The RCF is supplied in two parts; a plate axial fan and the roof terminal, this is for ease of handling and shipping. The plate axial fan simply bolts to the underneath of the roof terminal and then mounts onto the purlin box (or support).

# Group B - Monsoon Commercial & Industrial Products

## Fan Dimensions (mm)



## Purlin Box (mm)

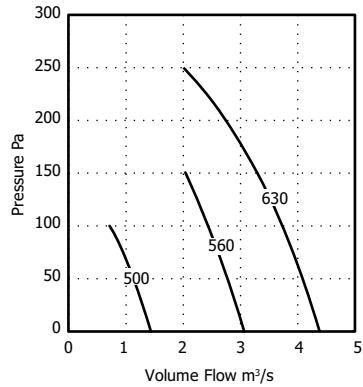
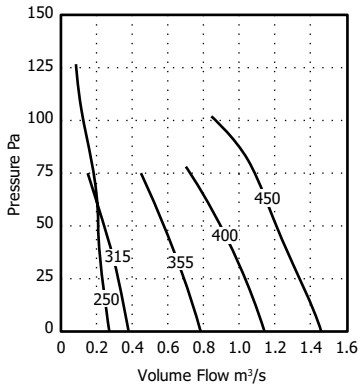


Size	a	b	c	d	e	f □	g □
250	625	90	240	765	400	590	460
315	625	90	240	765	400	590	460
355	625	90	240	765	400	590	460
400	725	90	240	865	500	705	565
450	725	90	240	865	500	705	565
500	890	70	250	990	650	850	640
560	890	70	250	990	650	870	700
630	1030	75	250	1140	760	985	775
710	1030	75	250	1140	760	985	840

Size	a	b	c	d	e	f	kg Max
250	700	475	737	411	97	675	13.25
315	700	475	737	411	97	675	16.3
355	700	475	737	411	97	675	16.3
400	800	575	830	466	97	775	18.4
450	800	575	830	466	97	775	20.3
500	950	715	1000	579	100	915	35.5
560	950	715	1000	579	100	915	35.5
630	1230	840	1100	731	105	1040	62
710	1230	840	1100	731	105	1040	62

# Group B - Monsoon Commercial & Industrial Products

## Performance Guide



DIA.	MOTOR PHASE	CODE	POLES	R.P.M	IP RATING	MOTOR KW	S.C. AMPS	F.L.C AMPS	DB(A) @ 3M
250	1	RCF250	2	2440	IP44	0.12	1.15	0.54	59
315	1	RCF315	4	1300	IP54	0.15	1.38	0.7	50
355	1	RCF355	4	1330	IP54	0.19	1.45	0.84	53
400	1	RCF400	4	1350	IP54	0.29	2.4	1.45	56
450	1	RCF450	4	1370	IP54	0.36	3.6	1.6	61
500	1	RCF500	4	1290	IP54	0.51	4.3	2.3	55
560	1	RCF560	4	1320	IP54	1.35	21	6	63
630	1	RCF630	4	1320	IP54	2.2	28	9.9	70

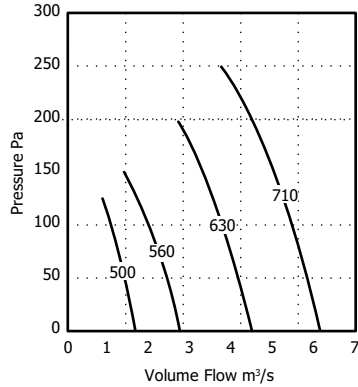
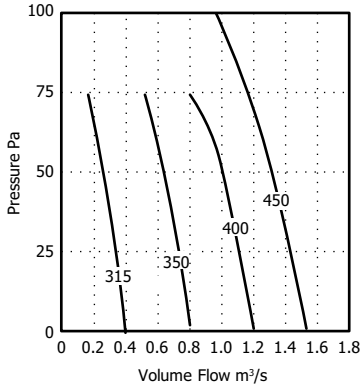
RCF25012, RCF31512 & RCF250 not suitable for reverse airflow.

## Sound Power Level Spectra dB (ref 10<sup>-12</sup> Watts)

DIA.	MOTOR PHASE	CODE	POLES	SPECTRUM	63	5	250	500	1K	2K	4K	8K	DB(A) @ 3M
250	1	RCF250	2	Inlet	69	70	76	76	70	70	67	59	57
250	1	RCF250	2	Outlet	69	70	76	76	70	70	67	59	57
315	1	RCF315	4	Inlet	70	68	66	61	60	62	58	51	47
315	1	RCF315	4	Outlet	70	68	66	61	60	62	58	51	47
355	1	RCF355	4	Inlet	65	70	67	65	64	64	62	55	50
355	1	RCF355	4	Outlet	65	70	67	65	64	64	62	55	50
400	1	RCF400	4	Inlet	70	72	67	66	65	65	64	56	51
400	1	RCF400	4	Outlet	70	72	67	66	65	65	64	56	51
450	1	RCF450	4	Inlet	69	76	73	72	70	71	70	62	57
450	1	RCF450	4	Outlet	69	76	73	72	70	71	70	62	57
500	1	RCF500	4	Inlet	65	75	69	70	70	71	69	62	56
500	1	RCF500	4	Outlet	65	75	69	70	70	71	69	62	56
560	1	RCF560	4	Inlet	100	90	89	84	82	79	75	68	67
560	1	RCF560	4	Outlet	100	90	89	84	82	79	75	68	67
630	1	RCF630	4	Inlet	82	86	79	79	80	78	75	70	64
630	1	RCF630	4	Outlet	82	86	79	79	80	78	75	70	64

# Group B - Monsoon Commercial & Industrial Products

## Performance Guide



DIA.	MOTOR PHASE	CODE	POLES	R.P.M	IP RATING	MOTOR KW	S.C. AMPS	F.L.C AMPS	DB(A) @ 3M
315	3	RCF315/4/T	4	1390	IP54	0.11	2.1	0.27	46
355	3	RCF355/4/T	4	1370	IP54	0.17	1.35	0.37	49
400	3	RCF400/4/T	4	1350	IP54	0.26	2.1	0.56	51
450	3	RCF450/4/T	4	1380	IP54	0.36	2.6	0.8	56
500	3	RCF500/4/T	4	1380	IP54	0.55	3.7	1.05	58
560	3	RCF560/4/T	4	1220	IP54	1.25	7.7	2.2	70
630	3	RCF630/4/T	4	1360	IP54	1.9	14	3.2	64
710	3	RCF710/4/T	4	1290	IP54	2.9	19	5.3	72

## Sound Power Level Spectra dB (ref 10<sup>-12</sup> Watts)

DIA.	MOTOR PHASE	CODE	POLES	SPECTRUM	63	125	250	500	1K	2K	4K	8K	DB(A) @ 3M
315	3	RCF315/4/T	4	Inlet	64	67	69	63	62	60	58	53	47
315	3	RCF315/4/T	4	Outlet	64	67	69	63	62	60	58	53	47
355	3	RCF355/4/T	4	Inlet	58	73	63	64	64	65	64	58	50
355	3	RCF355/4/T	4	Outlet	58	73	63	64	64	65	64	58	50
400	3	RCF400/4/T	4	Inlet	62	73	65	65	67	69	67	60	53
400	3	RCF400/4/T	4	Outlet	62	73	65	65	67	69	67	60	53
450	3	RCF450/4/T	4	Inlet	65	82	75	76	73	72	69	62	58
450	3	RCF450/4/T	4	Outlet	65	82	75	76	73	72	69	62	58
500	3	RCF500/4/T	4	Inlet	67	71	69	72	70	71	68	61	56
500	3	RCF500/4/T	4	Outlet	67	71	69	72	70	71	68	61	56
560	3	RCF560/4/T	4	Inlet	85	79	77	76	76	75	72	66	61
560	3	RCF560/4/T	4	Outlet	85	79	77	76	76	75	72	66	61
630	3	RCF630/4/T	4	Inlet	71	88	82	83	82	81	78	72	67
630	3	RCF630/4/T	4	Outlet	71	88	82	83	82	81	78	72	67
710	3	RCF71034	4	Inlet	80	87	86	88	89	86	83	79	72
710	3	RCF71034	4	Outlet	80	87	86	88	89	86	83	79	72