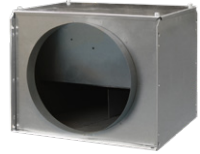


## Monsoon Acoustic Cabinet Centrifugal

- 'O' Class rated acoustically treated casing, ensuring minimum duct and breakout noise levels
- Air volumes up to 1.59m<sup>3</sup>/s
- Suitable for external pressures up to 500Pa
- Designed to suit duct diameters from 100 to 500mm
- Operating Temperatures from -15°C up to +40°C
- Speed Controllable
- Quality Assurance to BS EN ISO 9001:1994
- Performance tested to BS848 Part 1 1980



CODE	DESCRIPTION
MON-QP100	100mm Centrifugal Fan (0.06m <sup>3</sup> /s)
MON-QP125	125mm Centrifugal Fan (0.06m <sup>3</sup> /s)
MON-QP150	150mm Centrifugal Fan (0.12m <sup>3</sup> /s)
MON-QP160	160mm Centrifugal Fan (0.12m <sup>3</sup> /s)
MON-QP200	200mm Centrifugal Fan (0.24m <sup>3</sup> /s)
MON-QP250	250mm Centrifugal Fan (0.32m <sup>3</sup> /s)
MON-QP315	315mm Centrifugal Fan (0.81m <sup>3</sup> /s)
MON-QP400	400mm Centrifugal Fan (1.05m <sup>3</sup> /s)
MON-QP500	500mm Centrifugal Fan (1.52m <sup>3</sup> /s)

The Monsoon Acoustic Cabinet Centrifugal fans are designed around a high performance centrifugal impeller, offering a highly efficient, quiet and compact in-line acoustic fan.

The Monsoon Acoustic Cabinet Centrifugal fan range is manufactured from prime quality galvanised sheet steel, ensuring a robust in-line fan for those tough site conditions.

Monsoon Acoustic Cabinet Centrifugal casings are suitable for internal mounting and internally treated with an 'O' class rated acoustic foam, which offers the benefits of excellent low level duct bound and breakout sound levels, in addition self extinguishing properties, zero burn rate, resistant to ignition, and no toxic fumes.

Monsoon Acoustic Cabinet Centrifugal fans are suitable for circular ducting ranging in sizes 100, 125, 150, 160, 200, 250, 315, 400 and 500mm, with air volumes from 0.016m<sup>3</sup>/s to 1.8m<sup>3</sup>/s and pressure development of up to 500Pa.

The casing are specially designed to allow the unit to be mounted via drop rods or anti vibration mounts, ensuring a quick and easy solution to installation of the Monsoon Acoustic Cabinet Centrifugal in-line acoustic fans. All manufacturing processes of the Monsoon Acoustic Cabinet Centrifugal fan units are computer designed and controlled to BS EN ISO 9001 Standards.

### Impellers

The motor and backward curved impeller is factory matched, statically and dynamically balanced on precision machines, to DIN ISO 1940 Grade 6.3, to give quiet, vibration free running.

### Motors

Motor insulation Class B, suitable for operating temperatures from -15°C to +40°C and atmospheres up to 95% RH.

All sizes are ideally suitable for speed control by electronic or Voltage reduction. Vent-Axia would recommend that a Voltage reduction Auto Transformer speed controller is used with all Monsoon Acoustic Cabinet Centrifugal units to ensure minimum noise levels during speed control and to eliminate any possibility of harmonic noise levels which may occur when using electronic speed controllers at lower speeds.

### Performance

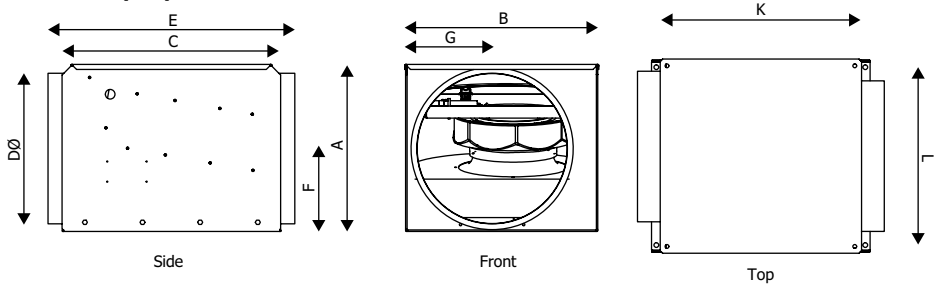
The fan performance is in accordance with tests to BS848 Part 1 1980, with the fan sound levels measured in a reverberant chamber in accordance with BS848 Part 2 1985.

### Quality Assurance

Design and manufacture is in accordance with the standard for quality management systems BS EN ISO 9001:1994.

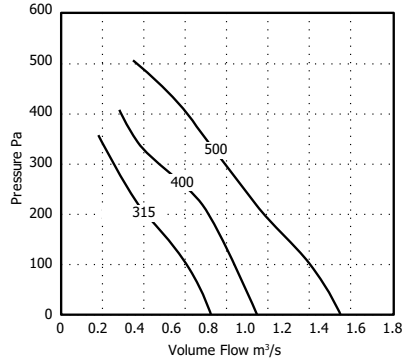
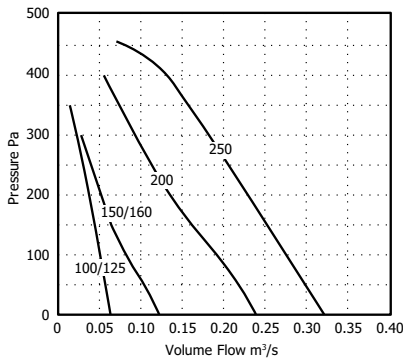
# Group B - Monsoon Commercial & Industrial Products

## Dimensions (mm)



STOCK REF	A	B	C	$\varnothing D$	E	F	G	K	L	KG
MON-QP100C	190	310	400	100	460	94	111	380	275	11
MON-QP125C	190	310	400	125	460	94	111	380	275	11
MON-QP150C	190	310	400	150	460	94	111	380	275	11
MON-QP160C	190	310	400	160	460	94	111	380	275	11
MON-QP200C	285	364	455	200	515	141	127	435	330	17
MON-QP250C	285	364	455	250	515	141	127	435	330	17
MON-QP315C	456	572	730	315	792	227	243	710	540	45
MON-QP400C	456	572	730	400	792	227	243	710	540	46
MON-QP500C	575	769	918	500	1006	286	326	898	735	77

## Performance Guide



CODE	DIA.	MOTOR PHASE	R.P.M	AIRFLOW M3/S	MOTOR KW	S.C. AMPS	F.L.C AMPS	DBA @ 3M
MON-QP100C	100	1	2350	0.06	0.05	0.37	0.23	32
MON-QP125C	125	1	2350	0.06	0.05	0.37	0.23	33
MON-QP150C	150	1	2350	0.12	0.05	0.37	0.23	33
MON-QP160C	150	1	2350	0.12	0.05	0.37	0.23	33
MON-QP200C	200	1	2700	0.24	0.09	0.85	0.38	36
MON-QP250C	250	1	2500	0.32	0.16	1.25	0.68	36
MON-QP315C	315	1	1330	0.81	0.27	2.2	1.18	38
MON-QP400C	400	1	1340	1.05	0.47	5.9	2.33	39
MON-QP500C	500	1	1330	1.52V	0.73	6.27	3.21	47

## Group B - Monsoon Commercial & Industrial Products

### Sound Power Level Spectra dB (ref 10<sup>-12</sup> Watts)

CODE	SPECTRUM	63	125	250	500	1K	2K	4K	8K	DB(A) @ 3M
MON-QP100C	Inlet	53	59	68	58	50	45	34	33	41
MON-QP100C	Outlet	54	57	63	59	60	54	49	42	43
MON-QP100C	Breakout	48	52	59	49	41	39	31	32	32
MON-QP125C	Inlet	51	65	73	62	51	46	36	36	45
MON-QP125C	Outlet	52	62	67	64	62	55	52	45	46
MON-QP125C	Breakout	51	53	60	49	41	40	33	33	33
MON-QP150C	Inlet	54	60	70	59	52	46	38	36	42
MON-QP150C	Outlet	56	58	63	58	59	56	49	43	43
MON-QP150C	Breakout	50	55	60	50	43	38	31	32	33
MON-QP160C	Inlet	54	60	70	59	52	46	38	36	42
MON-QP160C	Outlet	56	58	63	58	59	56	49	43	43
MON-QP160C	Breakout	50	55	60	50	43	38	31	32	33
MON-QP200C	Inlet	60	65	63	68	58	55	54	46	46
MON-QP200C	Outlet	60	63	68	72	68	67	62	53	53
MON-QP200C	Breakout	54	58	60	57	46	41	35	34	36
MON-QP250C	Inlet	64	74	72	67	57	55	56	53	48
MON-QP250C	Outlet	64	74	75	69	70	71	65	64	56
MON-QP250C	Breakout	52	57	68	52	44	40	36	38	39
MON-QP315C	Inlet	66	78	68	60	52	49	42	40	45
MON-QP315C	Outlet	67	75	77	71	69	62	56	49	53
MON-QP315C	Breakout	54	70	63	53	47	41	35	34	38
MON-QP400C	Inlet	73	82	79	68	62	55	50	49	52
MON-QP400C	Outlet	72	78	78	75	74	66	58	53	57
MON-QP400C	Breakout	57	71	63	56	51	46	39	35	39
MON-QP500C	Inlet	77	85	78	71	64	62	54	52	54
MON-QP500C	Outlet	74	83	82	78	77	72	64	58	61
MON-QP500C	Breakout	68	81	72	63	56	49	42	41	48