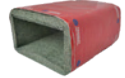
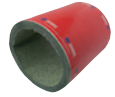


Fire Protection

| CODE | DESCRIPTION |
|-----------|---|
| IFSC100 | Intumescent Fire Cuff 100mm |
| IFSC125 | Intumescent Fire Cuff 125mm |
| IFSC150 | Intumescent Fire Cuff 150mm |
| IFSR110 | Intumescent Fire Cuff 110 x 54 |
| IFSR204 | Intumescent Fire Cuff 204 x 60 |
| IFSR204/3 | Intumescent Fire Cuff 204 x 60, 3 sided for flush fit |
| IFSR220 | Intumescent Fire Cuff 220 x 90 |
| QWW110/2 | 2 Hour Intumescent Pipe Wraps 100 -110mm |
| QWW130/2 | 2 Hour Intumescent Pipe Wraps 125mm |
| QWW160 | 2 Hour Intumescent Pipe Wraps 150mm |
| QWR110 | 4 Hour uPVC Pipe Fire Stop 100-110mm |
| QWR130 | 4 Hour uPVC Pipe Fire Stop 125-130mm |
| QWR160 | 4 Hour uPVC Pipe Fire Stop 150-160mm |
| QRS110x54 | 1 Hour Intumescent Fire Sleeves 110x54 |
| QRS204x60 | 1 Hour Intumescent Fire Sleeves 204x60 |
| QRS220/90 | 1 Hour Intumescent Fire Sleeves 220x90 |
| FREV100 | 60min Fire Rated Intumescent Extract Air Valves 100mm |
| FREV125 | 60min Fire Rated Intumescent Extract Air Valves 125mm |
| FREV150 | 60min Fire Rated Intumescent Extract Air Valves 150mm |
| FRSV100 | 60min Fire Rated Intumescent Supply Air Valves 100mm |
| FRSV125 | 60min Fire Rated Intumescent Supply Air Valves 125mm |
| FRSV150 | 60min Fire Rated Intumescent Supply Air Valves 150mm |



National Ventilation does not guarantee compliance with Building Regulations Part B, Fire Spread or other regulations that relate to fire planning. Suitability to comply with these regulations should be determined prior to installation and in conjunction with Building Control Officers. Compliance with the Regulations is specifically excluded from quotations and designs.