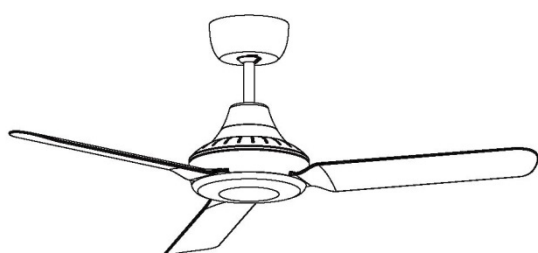
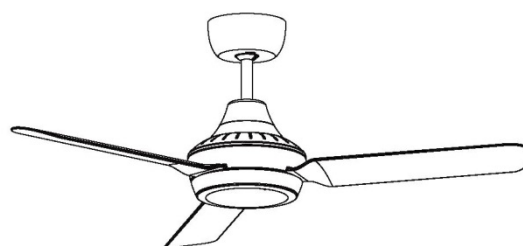


ventairtm

THE AIR MOVEMENT SPECIALISTS



Model:- STA1203WH



Model:- STA1203WHLED

Installation Instructions

STANZA
CEILING FAN INNOVATION

PLEASE READ INSTRUCTIONS IN CONJUNCTION WITH ILLUSTRATIONS.
PLEASE SAVE THESE INSTRUCTIONS.

**UK
CA** **CE**

Thank you for purchasing this quality Ventair ceiling fan. To ensure correct function and safety, Please read all Instructions before using the product and keep all Instructions for future reference.

The information contained in the following pages has been prepared to ensure you of trouble-free operation of your ceiling fan.

SAFETY AND GUIDANCE NOTES

1. To ensure the success of the installation, be sure to read the instructions and study the diagrams thoroughly.
2. All electrical work should only commence after disconnection of the power. Remove fuses or turn off the circuit breaker to ensure all pole isolation of the electrical supply.
3. Make sure that your installation site will not allow the rotating fan blades to come in contact with any object and that there is a minimum clearance of 150mm from the blade tip to the wall or ceiling. Please note that the greater the clearance around the fan, the better the airflow will be.
4. The fixing point for the fan must be able to support the weight of 4 times that of the net weight of the fan.
Net weights can be found on the next page. If you are mounting the fan to a ceiling junction box, the box and fixing must be able to support the moving weight of the fan and must not twist or work loose.
5. The fan must be earthed.
6. Do not connect the fan motor to a dimmer switch. This may give an unsatisfactory performance (motor hum) and cause a damage to the motor.
7. It is not recommended that ceiling fans and gas appliances be operated in the same room at the same time.

8. Do not insert anything into the fan blades while the fan is operating. This will damage the blades and upset the balance of the unit causing the unit to wobble.
9. After the fan is completely installed, make sure that all connections are secured and tightened to prevent any problems.
10. Because of the fan's natural movement, some connections may loosen. Check the support connections, brackets and blade attachments twice a year to make sure they are all secured. If they are loose, tighten with a screwdriver.
11. Always have your fan installed by a licensed electrician.
12. This appliance is not intended for use by persons (including children) with reduced physical, sensory or mental capabilities, or lack of experience and knowledge, unless they have been given supervision or instruction concerning use of the appliance by a person responsible for their safety.
13. Children should be supervised to ensure that they do not play with the appliance.
14. The fan is to be installed so that the blades are at least 2.3 metres or more above the floor.
15. All wiring to be in accordance with the current I.E.E. Regulations, or the appropriate standards of your country and **MUST** be installed by a suitably qualified person.
16. The Fan should be provided with a local isolator switch capable of disconnecting all poles, having a contact separation of at least 3mm.

SPECIFICATION

Model	Light Wattage (W)	Fan Wattage (W)	Voltage (V)	Frequency (Hz)	Net Weight (kg)
STA1203WH	No light	55 Watts	220-240V	50Hz	6.80kg
STA1203WHLED	20 Watts	55 Watts	220-240V	50Hz	7.0kg

This 433MHz radio equipment complies with the RED Directive 2014/53 EU and the below relevant standards:-

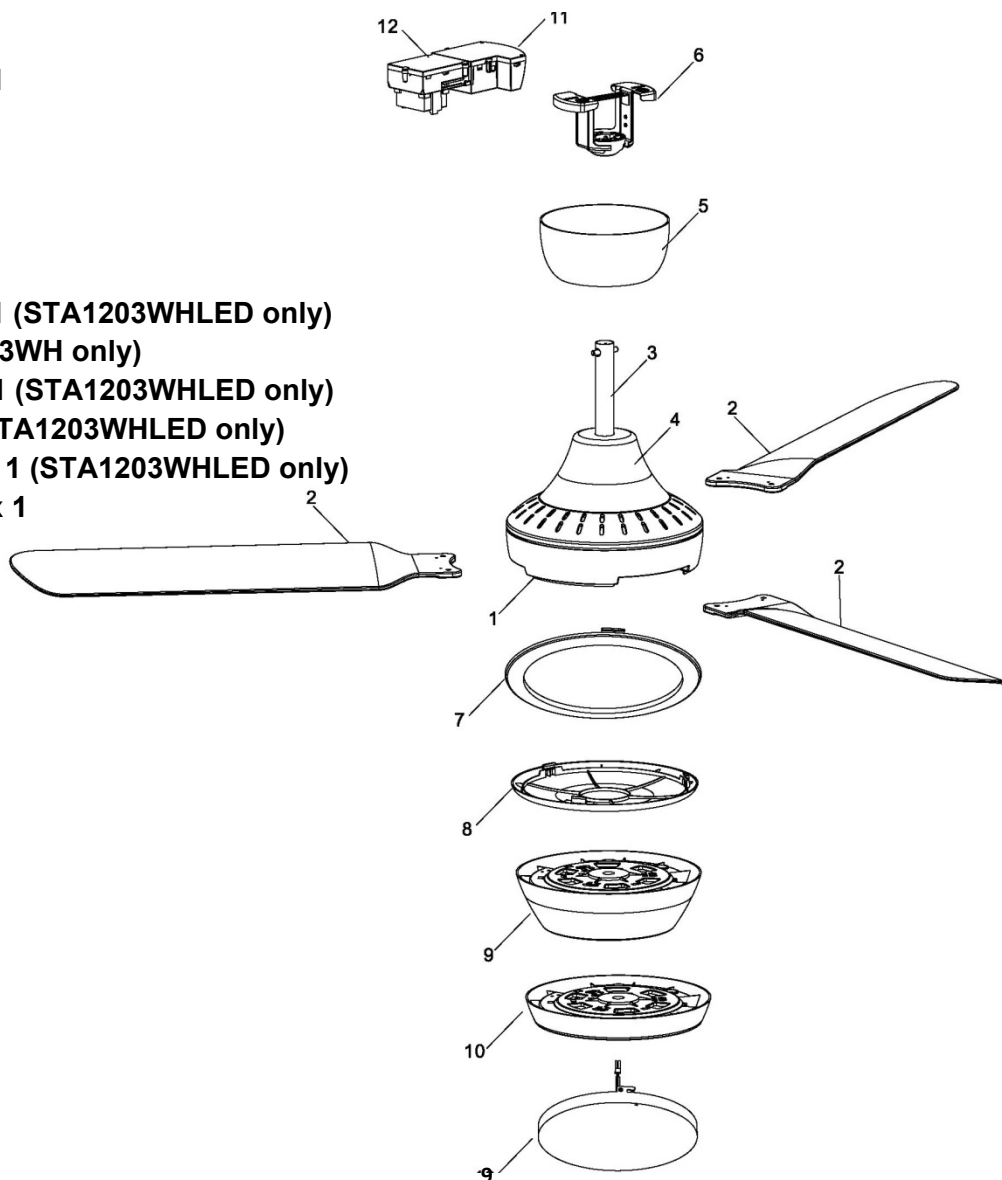
ETSI EN 300 220-1 V3.1.1 (2017-02), ETSI EN 300 220-1 V3.2.1 (2018-06),
 ETSI EN 301 489-1 V2.2.3 (2019-11), ETSI EN 301 489-3 V2.1.1 (2019-03)
 EN62479:2010
 EN62368-1+A11 2020

Parts List

Unpack the fan carefully identify the parts below (Check Model type)

Parts

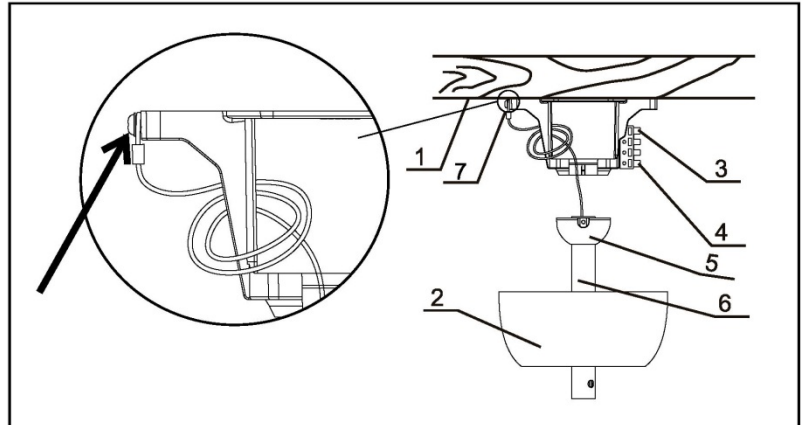
- 1). Motor assembly x 1
- 2). Blades x 3
- 3). Down Rod x 1
- 4). Lower Canopy x 1
- 5). Upper Canopy x 1
- 6). Hang sure set x 1
- 7). Decorative Ring x 1 (STA1203WHLED only)
- 8). Fascia x 1 (STA1203WH only)
- 9). LED Light Panel x 1 (STA1203WHLED only)
- 10). Light Frame x 1 (STA1203WHLED only)
- 11). LED Light Driver x 1 (STA1203WHLED only)
- 12). Remote Receiver x 1



Installation

Mounting Plate Hanging System

1. Ceiling Joist
2. Canopy
3. Quick Fix terminal Block
4. Earth Wire
5. Hanger Ball
6. Down Rod
7. Safety steel wire(to be fixed on the bracket via the screw)



Fix Bracket to ceiling.

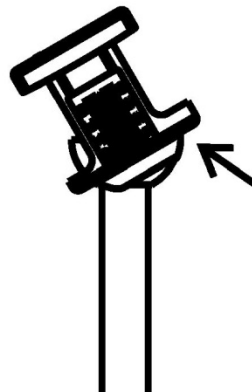
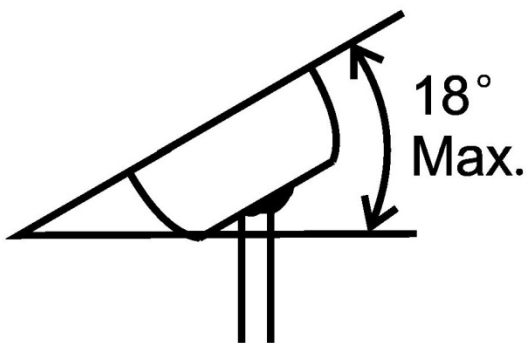
- 1.Ensure Bracing structure is solid and firm and able to support at least 4 times the weight of the actual fan.
- 2.Bracket must be fixed securely using only the specially rated screws provided. (failure to comply may result in voiding of warranty)
- 3.Ensure fixing and Bracing structure allows no movement, as this can cause unnecessary noises and wear and tear on the parts.



Please ensure the fixing tab fits into the groove of the hanger ball.

Installation on a racked ceiling

1. Please ensure the fixing tab fits in the groove of the of the hanger ball.
2. Ensure the fixing tab is set at the highest point.

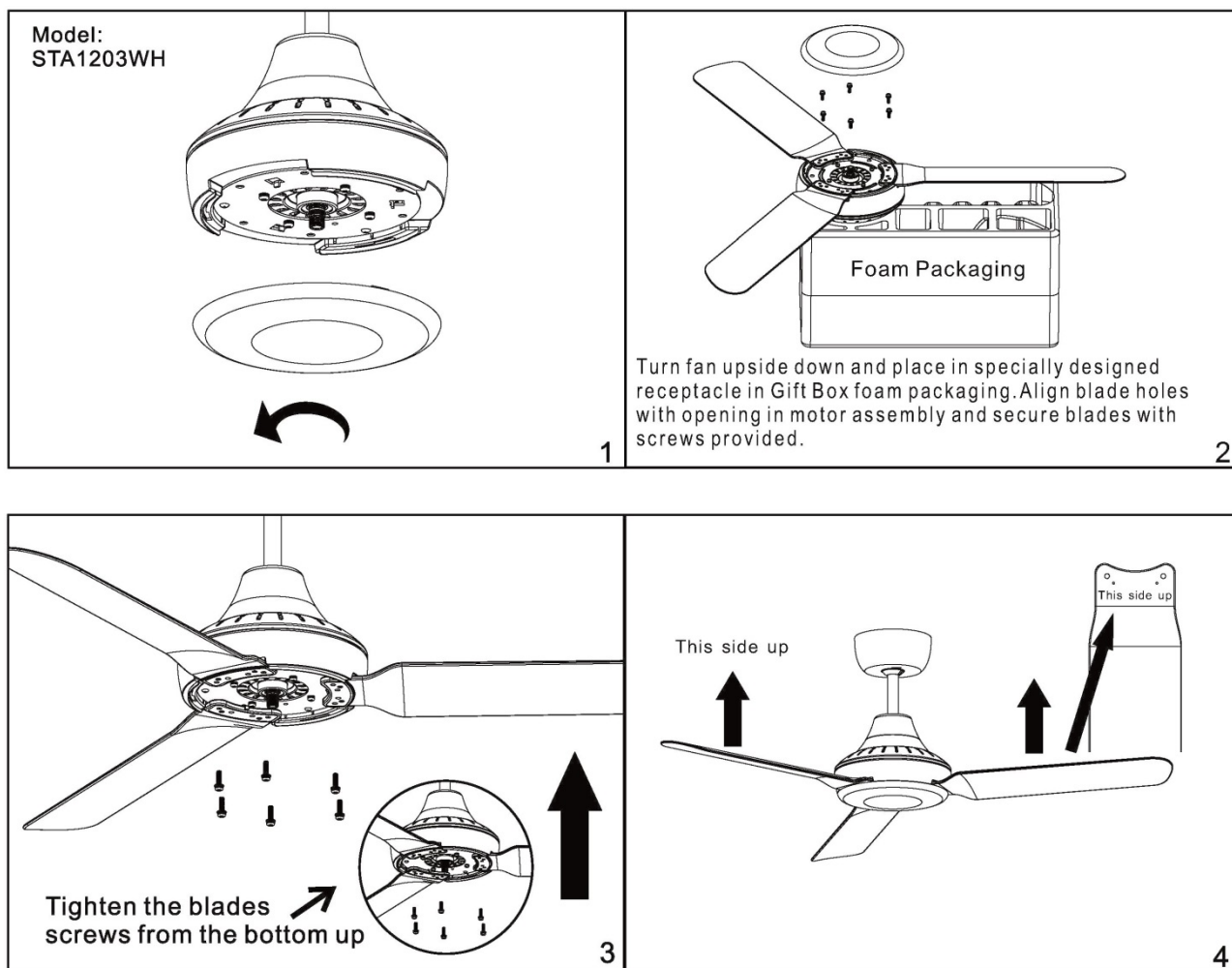


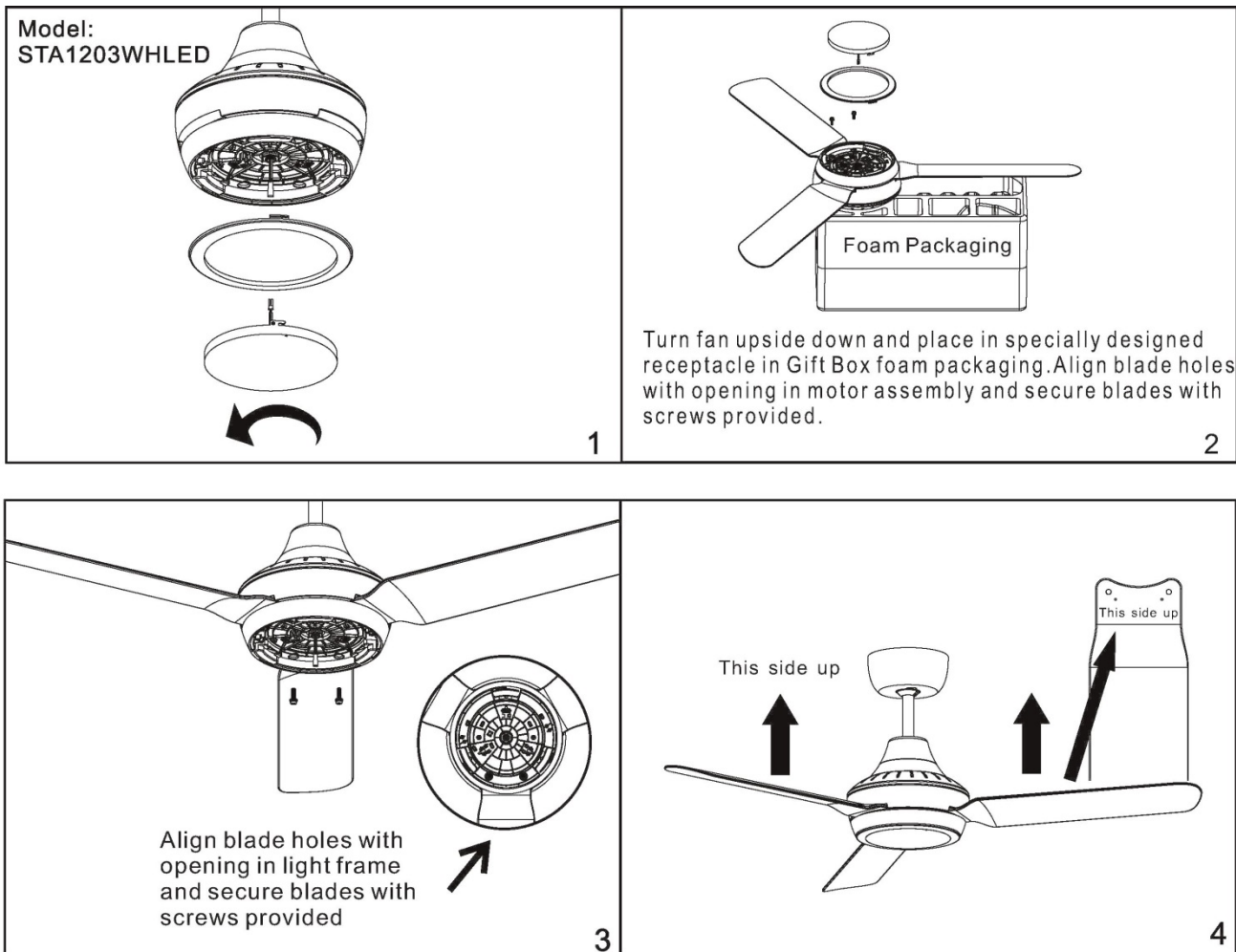
Fixing tab at highest point

Blade Assembly (Section Option below)

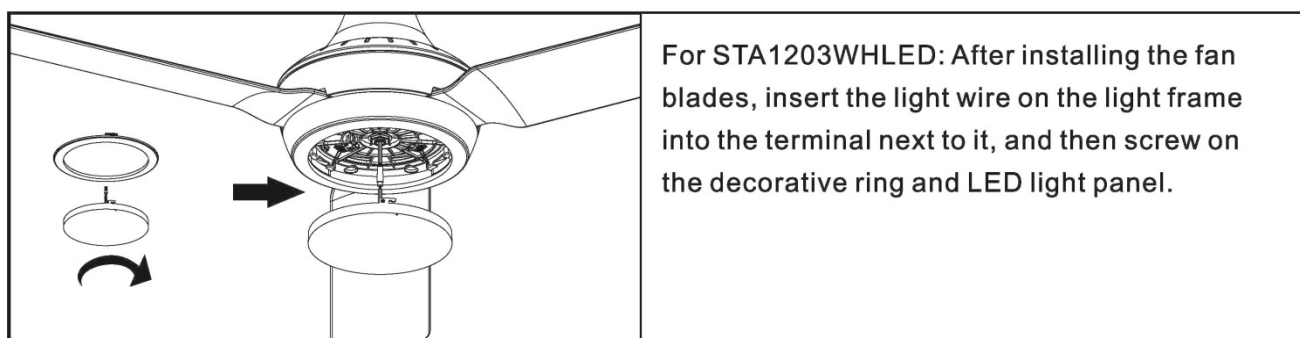
1. Remove Fascia or LED (Turning counter clockwise direction)
2. Option 1:- Quick Fix blade assembly
3. Option 2:- Attaching blades in hanging position

Note:- “THIS SIDE UP” text on the blades should be facing upwards once the fan is installed.



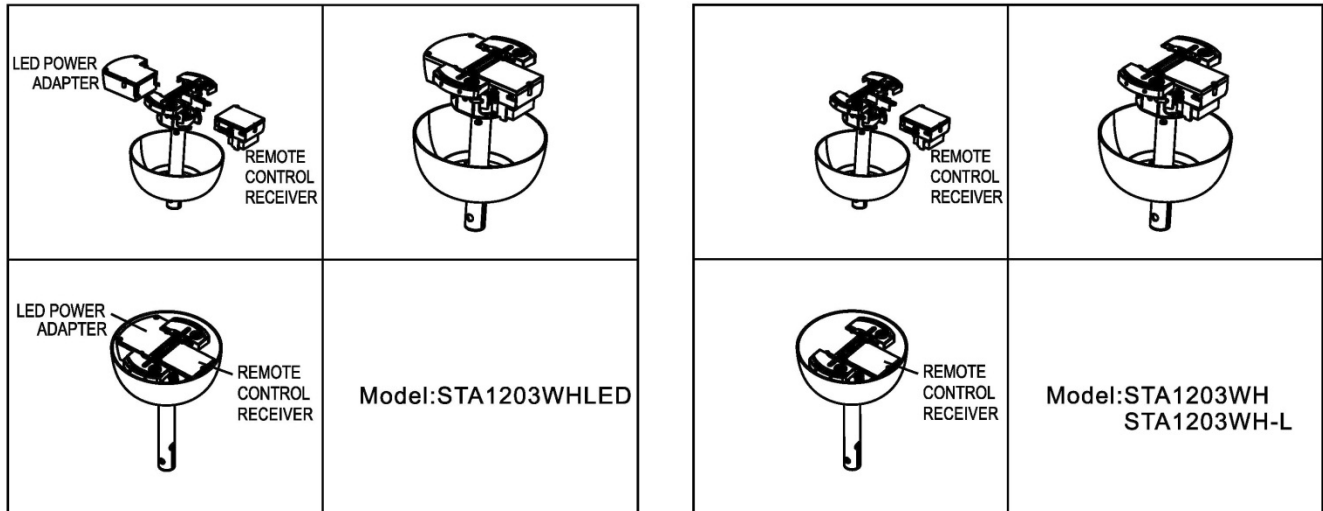


Light kit assembly



WARNING:- For your safety, Ensure the mains supply is switched off and isolated before performing any electrical work.

Installing the Remote Control



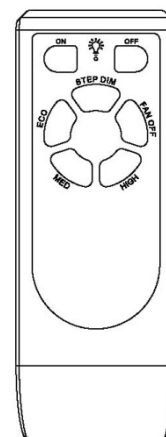
The remote handset comes factory paired with the remote receiver, but if you wish to pair a remote hand piece to multiple fans, see below.

Step 1 : Turn “OFF” power at isolation switch.

Step 2: Turn “ON” power at isolation switch and within 10 seconds, Press LIGHT “ON” button for 3-4 seconds until a “Tick-Tack” sound is heard. (Repeat steps above if not successful).

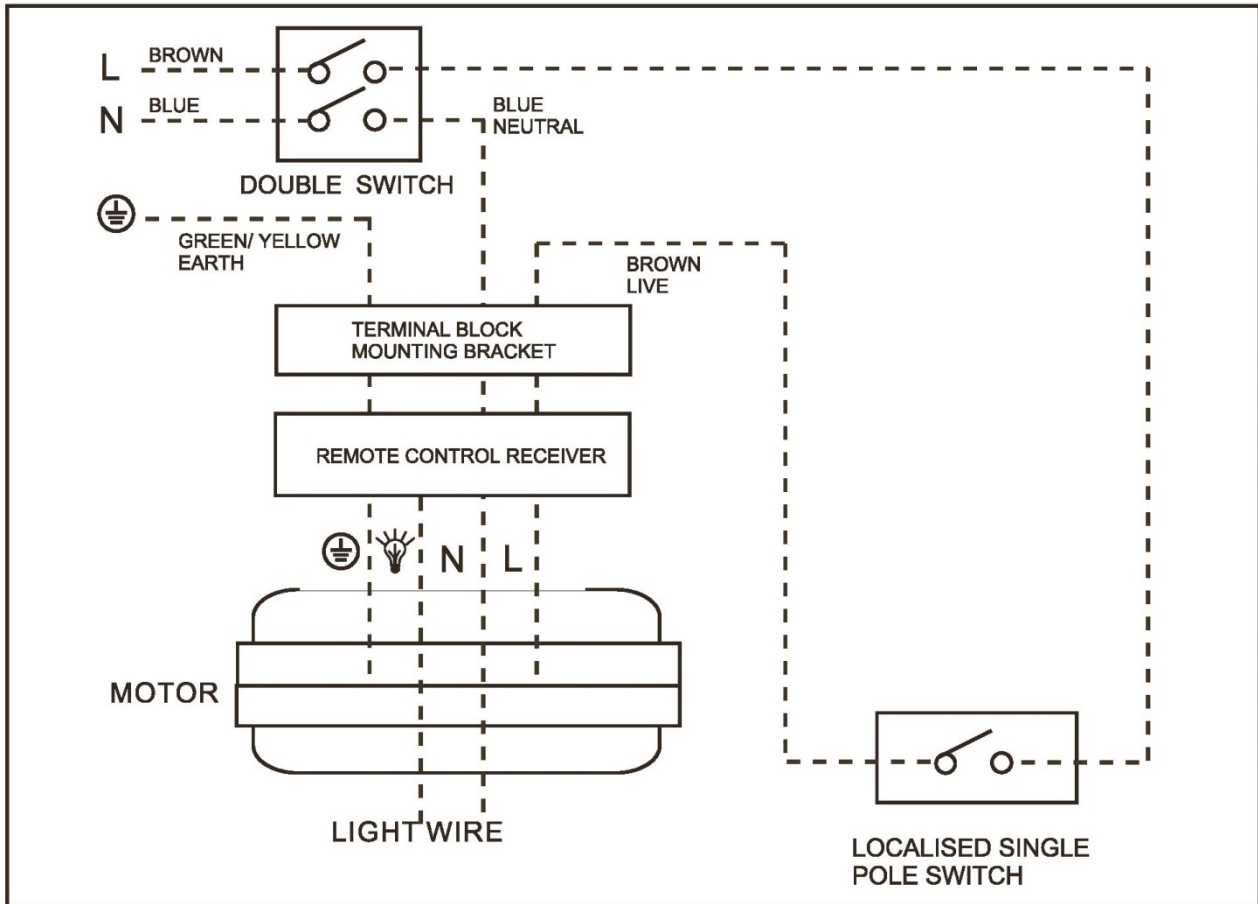
How to Operate using the Remote control.

1. Use Eco/Med/High buttons to alter the fan speed.
2. “OFF” button will turn the fan off only.
3. Turn Light “ON/OFF” with the light buttons.
4. Press the “STEP DIM” button to transition through 75%, 50%, 25% then back to 100% of light output.



Wiring Diagram for isolation switch with Remote Control

WARNING:- For your safety, Ensure the mains supply is switched off and isolated before performing any electrical work.



Step 1 : Connect the EARTH wire to the terminal port marked “⊕” on the terminal block mounting bracket.

Step 2: Connect the supply LIVE wire to the localised single pole switch and then wire to the terminal port marked “L” on the terminal block mounting bracket.

Step 3: Connect the supply Neutral wire to the terminal port marked “N” on the terminal block mounting bracket.

Once all the above steps have been followed, you are now ready to restore the mains power supply. Make sure there is nobody near or under the fan, then turn ON the fan.

Installation Tips

The fixing point for the fan must be able to support the weight of 4 times that of the net weight of the fan. If you are mounting the fan to a ceiling junction box, the box and fixing must be able to support the moving weight of the fan and must not twist or work loose.

All pole disconnection switches must be included in the fixed wiring.

Do not use a solid state dimmer control.

Do not use the light switch to control the fan motor.

After the wiring connections are completed, ensure that all wires are arranged in a tidy manner, and make sure the ball sits well into the bracket, as it is important to reduce your fan from wobbling.

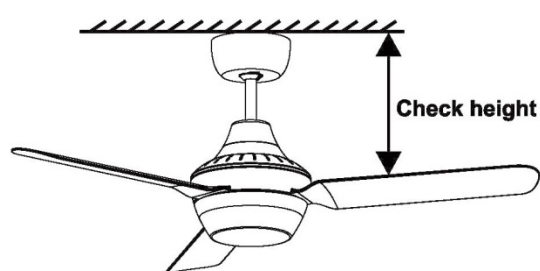
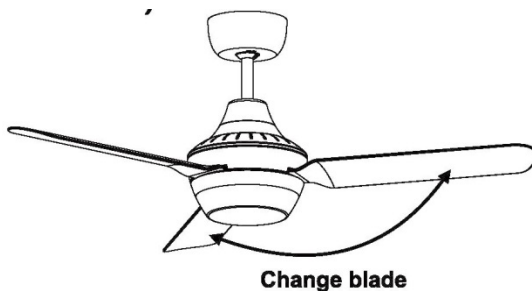
Maintenance and Troubleshooting

- Keep the fan clean. Wipe away dirt with a clean soft cloth, ordinary soap and water, wipe dry. Do not use solvents, etc. (Gasoline or petroleum).
- Make sure to disconnect the power supply before cleaning and maintenance is carried out.
- Ensure that the fan is switched off from the supply mains before removing the guard.

The points described below should be checked, and corrected if necessary, upon installation and at least once a year thereafter.

Excessive movement and wobbling?

- Check all screws, bolts and nuts are secured tightly.
- Change position of the blades.
- Check blade height, carefully rotate the fan and measure each blade from a fixed point on the ceiling. (Adjust if necessary, by loosening and re tightening the upper and lower blade screws).



Does the motor, down rod or other components shake or vibrate abnormally?

Shaking and abnormal vibration can be caused if the blade holding screws or screws for the suspended parts are loose, or if a blade is deformed. If a blade is deformed, all 3 blades should be replaced as a set.

Is there any unusual noise such as knocking or ticking?

Are the blade holding screws or screws for the suspended parts loose?

1. Make sure the bracing structure is sound and firm. Even slightly loose fixings may create knocking or ticking that will reverberate down through the fan. Upper canopy should not be in contact with the ceiling surface. It is suggested to leave an even 1mm to 4mm gap between the ceiling and the edge of the upper canopy.
2. Irregular humming noise may be caused by electrical interference from another appliance, or ripple control signals being introduced by the electricity provider.

Night Noise

This is the biggest cause for service calls, which are outside the manufacturers warranty. If a fan has a fault, it will always be noticeable. Naturally when everything is quiet at night, you will be more inclined to hear small noises, which may not be noticeable other times. Even slight power fluctuations and/or mains frequency control signals superimposed in your electricity supply for off peak hot water control may cause a change in the fan motor noise. This is normal.

Warning:

If at any stage the fan develops excessive wobbling or unusual oscillating movement is observed, immediately stop using the ceiling fan and contact the manufacturer, its service agent or suitably qualified persons.

Fan Light:

Except for an actual fault in manufacturing, which is extremely rare, noises and vibrations are often more accentuated when a fan light is fitted. For instance, a fan light glass that has not been tightened or worked loose can cause a rattle. Frequent care and maintenance will reduce this.



Do not dispose of electrical products with household waste. Please check with your local council for advice on disposal or recycling. If electrical appliances are disposed of in landfills or dumps, hazardous substances can leak into the groundwater and get into the food chain, damaging your health and well-being.

ventairtm
THE AIR MOVEMENT SPECIALISTS