

**NATIONAL
VENTILATION**

Manufacturers & suppliers
of  **monsoon** products

Energysaver Zone I Fan Kit Range

Low noise, low energy fan kit



- Can be installed in Zone 1 without transformer (30mA RCD must be fitted)
- Low noise as low as 25 dB(A)
- Specific fan power as low as 0.27 W/l/s
- Max consumption only 7.5W
- Complies with both Part F & L
- 3 year guarantee
- Comes complete with Energysaver™ wall kit

Call now to find out more: 01823 690 290

www.nationalventilation.co.uk Email: info@nvagroup.co.uk

The Zone 1 Silence Kits consist of the Monsoon 100mm Silence fan (five model options), a 100mm semi-rigid wall sleeve 300mm in length and the Energysaver™ patented designed exterior cowl (white or brown). The kits provide the installer with a high performance, low noise, low energy IP45 fan suitable for Zone 1 without a bulky low-volt transformer* and a unique wall installation kit which provides 20% less resistance than standard grilles or cowls. * A 30mA RCD must be fitted

Models available

CODE	DESCRIPTION
Z1KIT-S	Standard Fan IP45 100mm c/w Duct and Energysaver™ Grille
Z1KIT-T	Timer Fan IP45 100mm c/w Duct and Energysaver™ Grille
Z1KIT-HT	Humidistat/Timer Fan IP45 100mm c/w Duct and Energysaver™ Grille
Z1KIT-PIR	PIR Fan IP45 100mm c/w Duct and Energysaver™ Grille
Z1KIT-PC	Pullcord Fan IP45 100mm c/w Duct and Energysaver™ Grille

Kit contents

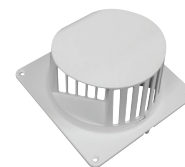
The Monsoon Silence IP45 range is a perfect combination of silent operation and high efficiency with a aerodynamic mixed-flow impeller. Airflow performance of 97m³/h and fan casing incorporates anti-vibration mounts with maximum fan noise level of only 25 dB(A). Energy efficient ball bearing motor with maximum consumption of just 7.5 Watts.



The kits come complete with a handy 100mm semi-rigid aluminium wall sleeve in a 300mm length. The fan can also be fitted to the ceiling or through the window (additional fixings required).



The independently tested, patented Energysaver™ cowl has up to 20% less resistance to airflow making the extraction 20% more energy efficient. It also alleviates 'blow back' further increasing extractor fan efficiency and reducing energy consumption, all of which contribute to a reduction in the carbon footprint.



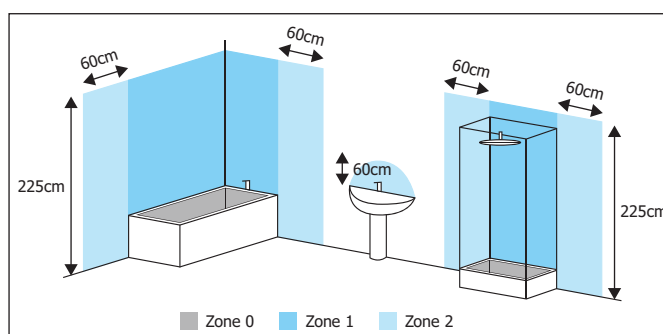
Bathroom Zones guide

Bathroom Zone 0

Inside the bath or shower. Any fitting used here must be SELV (max 12V) and a minimum of IPX7 (protected against immersion in water).

Bathroom Zone 1

The area directly above zone 0, limited to a height of 2.25m above the bath or shower. Requires electrical products to have an IPX5 or better. Products using safety extra low voltage (SELV 12V AC and 30V DC) can be used but the transformer must be located outside zones 0, 1 and 2 or beyond. If the fitting is fed by a 240V supply a 30mA residual current device (RCD) must also be used to protect the circuit in this zone.



Bathroom Zone 2

The area beyond zones 0 and 1, stretching 0.6m horizontally and up to 2.25m vertically. Also includes the recessed area of a window with a sill next to the bath. Requires electrical products to have an IPX4 or better. SELV with the transformer located outside of zones 0, 1 and 2 or beyond.

Call now to find out more: 01823 690 290

www.nationalventilation.co.uk Email: info@nvagroup.co.uk